



Matrix Updates

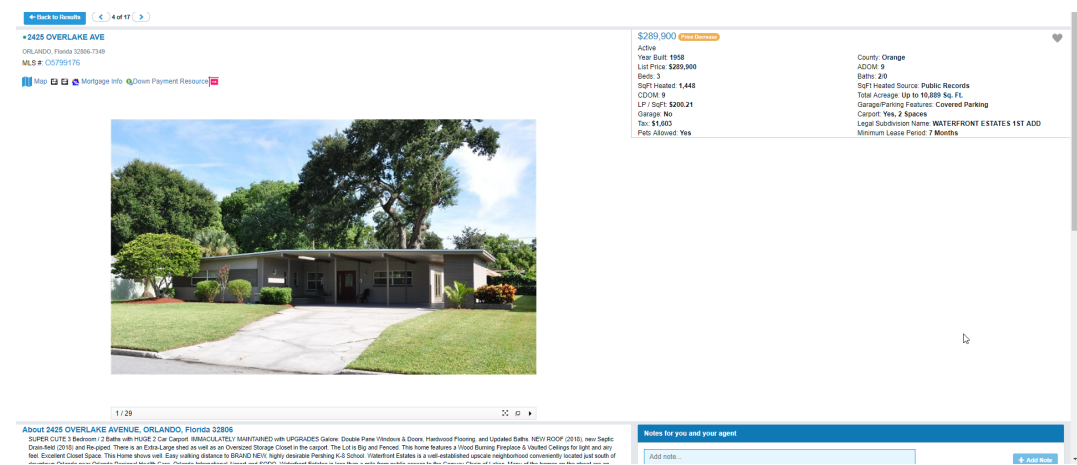
August 6, 2019

Customer Portal Responsive Full Display

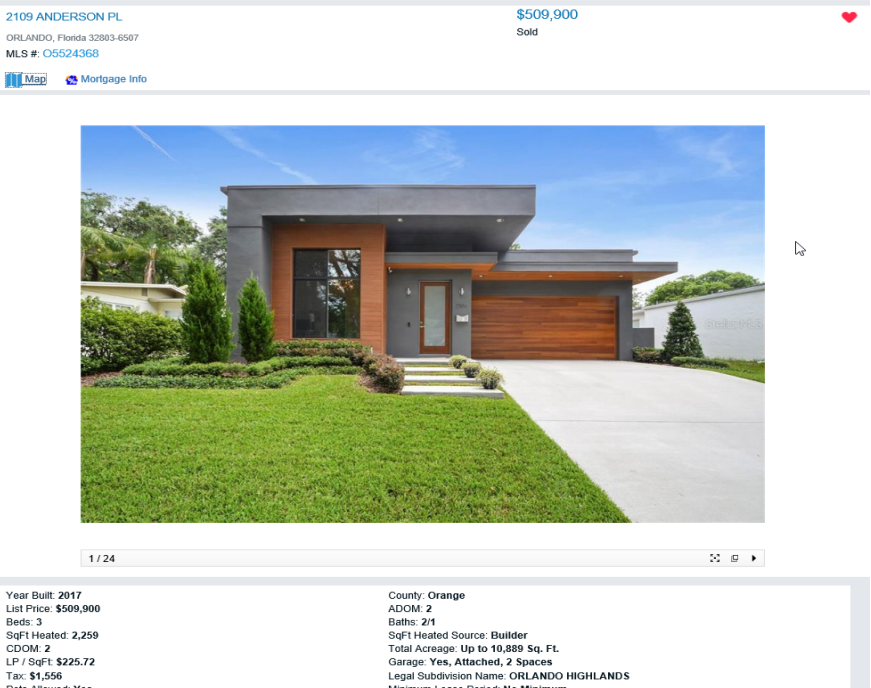
Listing photos are now aligned to the web pages' center.

Note: This only applies to the responsive full display – not static displays.

Before - Excessive white space.




After - Photo is now nicely centered.



New Search Control For Pets Allowed

The search control for Residential now matches the input control.

RESIDENTIAL

 Additional Fields [Add/Remove](#)


Pets Allowed (RES)





Breed Restrictions
No
Number Limit
Size Limit
Yes

☐ And ☒ Or ☐ Not

RENT/LEASE

Pets Allowed

 Breed Restrictions
Cats OK
Dogs OK
Monthly Pet Fee
No
Number Limit
Pet Deposit
Size Limit
Yes

Open House Active/Inactive Search Control

A new active/inactive search control field is now available on the Open House search page within Matrix.

This control allows you to filter searches by Open House status.

The screenshot displays the 'Open House Search' interface. On the left, under 'Open House Type', there are radio buttons for 'Office Only', 'MLS Wide', and 'Public', with an 'Or Not' option. Below this is the 'Open House Date' field. Under 'Property Type', there are radio buttons for 'Residential', 'Commercial', 'Income', 'Vacant Land', and 'Rental', also with an 'Or Not' option. A new section, 'Status Active', is highlighted with a red box; it contains a dropdown menu with 'Yes' and 'No' options, and an 'Or Not' radio button. Below this is the 'My Office Open House' checkbox. The main search area includes a 'Map Search' section with a 'No Map Selected' status and a 'Within' field. Below this are fields for 'St #', 'Dir Pfx', 'Street Name', 'St Type', 'Dir Sfx', and 'Unit #', with a 'More' button. The 'County' and 'MLS Zip' sections have dropdown menus. The 'City' and 'List Agent ID' fields are also present. The 'Legal Subdivision Name' and 'List Office ID' fields are at the bottom. On the right side, there are fields for 'ML Number', 'Price' (with a '(000s)' checkbox), 'Total Bedrooms', '# Full Baths', 'Sq Ft Heated', 'Year Built', 'Private Pool', and 'Total Acreage' (with a dropdown menu). At the bottom, there is a 'Clear' button, a '5000+ matches' indicator, and 'Map' and 'Results' buttons. An 'Additional Fields' link is at the very bottom.

For Support Please email
Support@stellarmls.com
or call 800-686-7451